

FOOD FAIR

BOURSE AUX DONS / SCHENKINGSBEURS

May 19, BERLIN

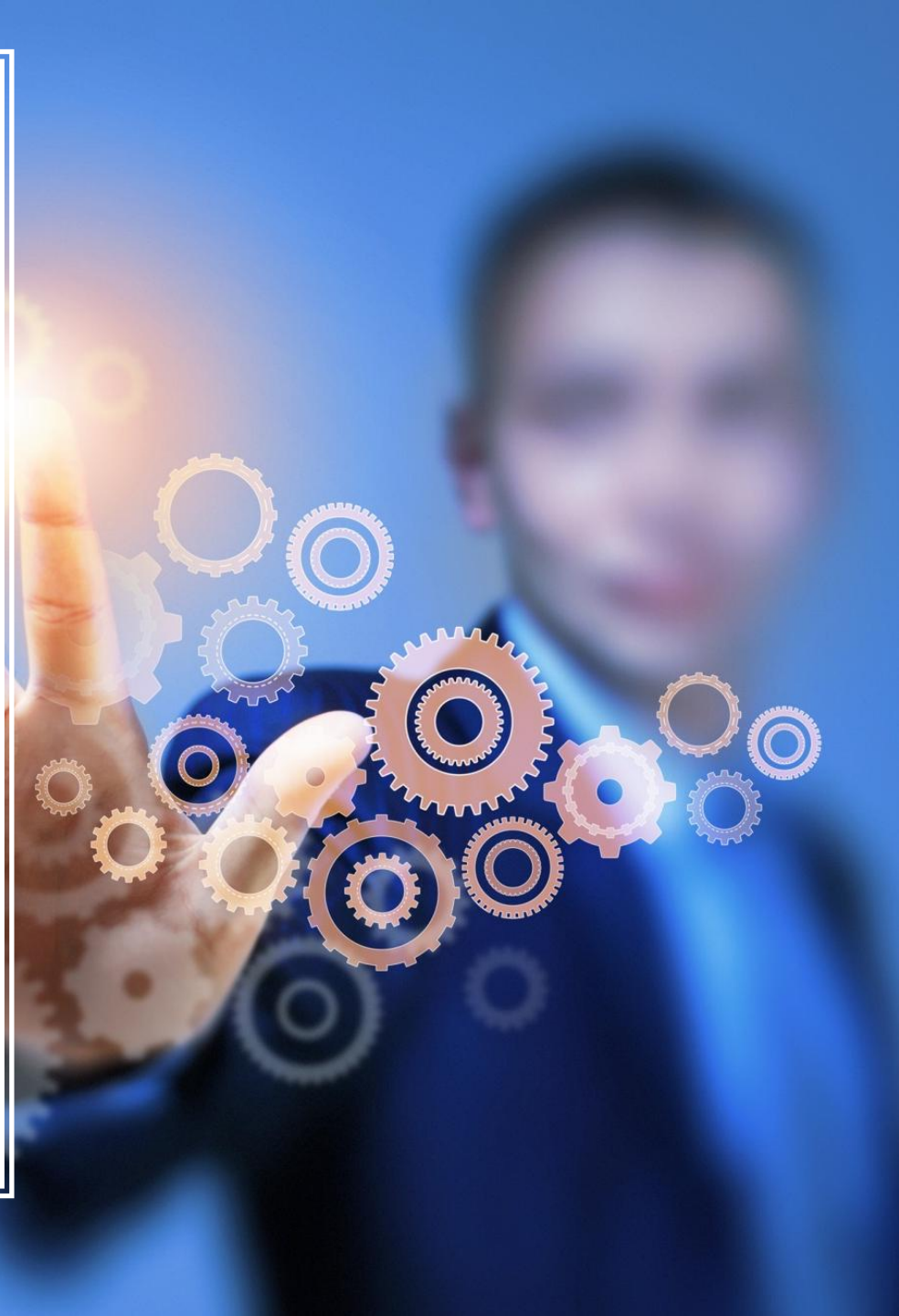
Marion Cocina – marion.cocina@level-it.be



BOURSE AUX DONS
SCHENKINGSBEURS

WHO ARE WE ?

- Level IT is a SME of the Liege Science Park active in the Digital sector since year 2000 in Belgium.
- Entrepreneurship is our ADN, R&I are our process.
- In practice, we design, build and operate smart management solutions (Platforms and Apps) to create Sustainable values.



OUR FIELDS OF ACTIVITY

Industry

L'ORÉAL
LIBRAMONT S.A.

Distribution

nethys

Pharmacy

gsk
GlaxoSmithKline

Humanitarian

CROIX-ROUGE
de Belgique

Engineering



Agronomy

Arlon
campus
environnement

Societal

 BOURSE AUX DONNS

Education

 C.B.C.E.C.
Société Royale

University

Université
de Liège 

PROGRAM HISTORY



BOURSE AUX DONS



- 2009

- R&D project with internship students in Computer Sciences
- Winner of Belgian final of Microsoft Imagine Cup 2009 global competition



- 2013

- Partnership Carrefour Belgium and the city of Seraing to conduct a pilot project
- Sponsorship of the project by Logistics in Wallonia.



- 2014

- Start of communication about www.bourseauxdons.be / www.schenkingsbeurs.be



- 2015

- Operational partnership with FdSS and KOMOSIE to support the 3 regions of Belgium
- Honors of the Government of Wallonia



- 2016

- Strategic guidance in Circular Economy by SRIW



La Bourse aux dons, c'est lutter
contre le gaspillage alimentaire

INSCRIVEZ-VOUS



Bienvenue sur la Bourse aux dons

The multisectoral platform for managing food donations

Find a food aid organization



Suggest or benefit from systematic donations

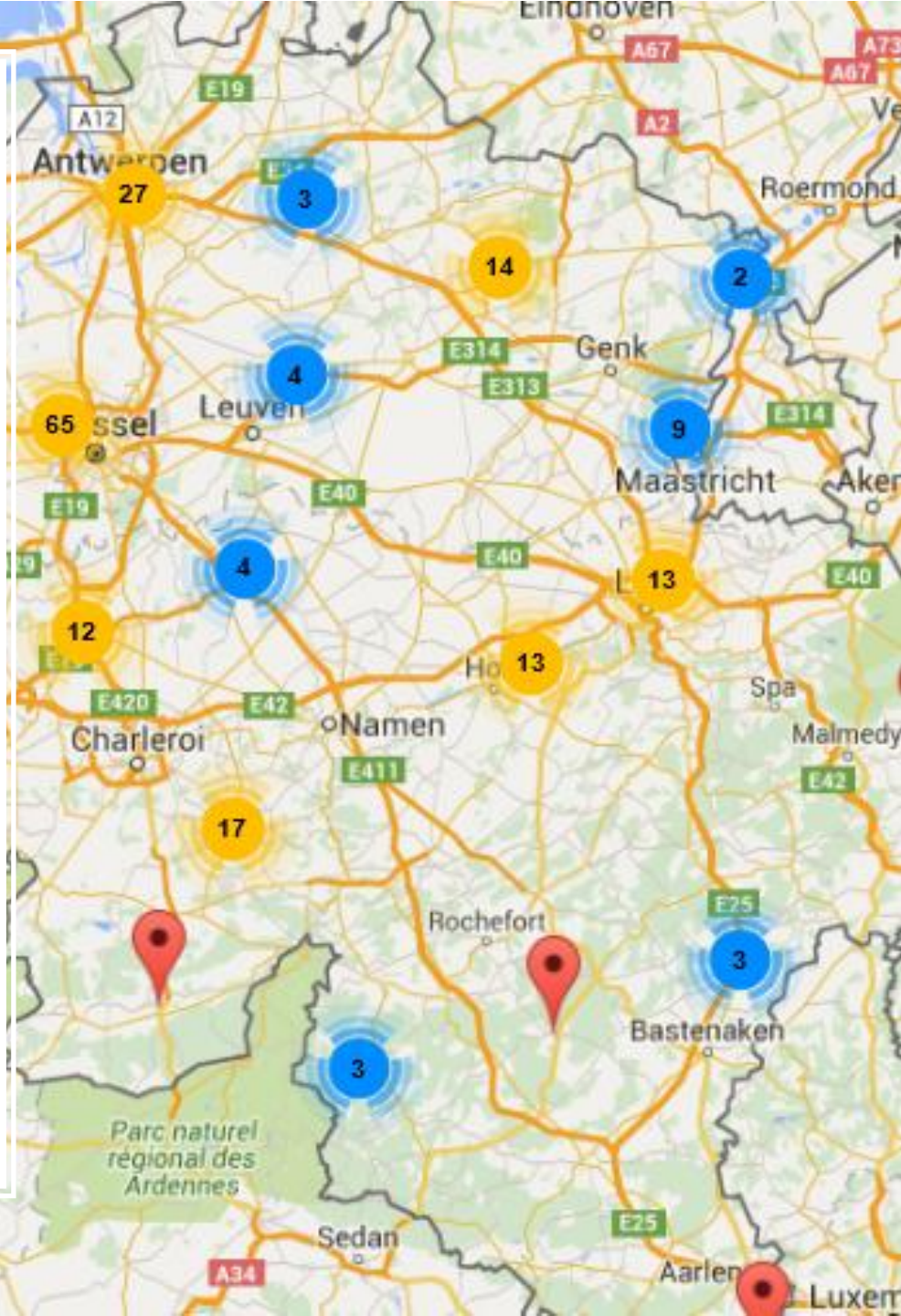


Offer or book an occasional donation

GEOGRAPHICAL MAP OF FOOD AID ORGANIZATIONS

Contact information

- Contactperson,
- Required food products
- Opening hours
- Storage capacities
- Transport capacities
- Etc.

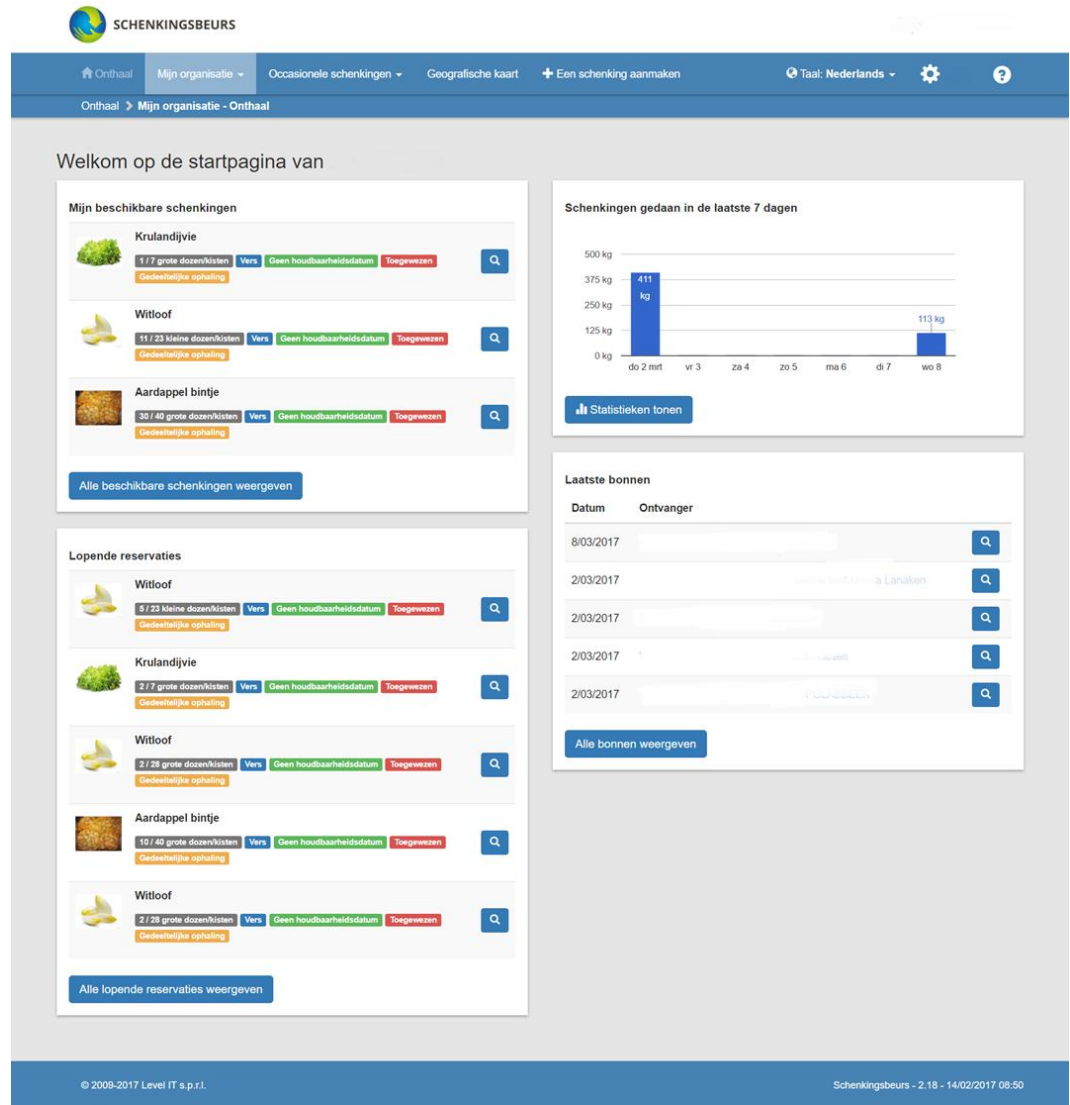


OCCASIONNAL DONATIONS

Donor creates an announcement on the Food Fair platform to suggest a food donation.



The organization books the available donations.



SCHENKINGSBEURS

Onthaal | Mijn organisatie | Occasionele schenkingen | Geografische kaart | + Een schenking aanmaken | Taal: Nederlands

Onthaal > Mijn organisatie - Onthaal

Welkom op de startpagina van

Mijn beschikbare schenkingen

- Kruldijvie**
1 / 7 grote dozen/kisten | Vers | Geen houdbaarheidsdatum | Toegewezen
Gedetailleerde ophaling
- Witloof**
11 / 23 kleine dozen/kisten | Vers | Geen houdbaarheidsdatum | Toegewezen
Gedetailleerde ophaling
- Aardappel bintje**
30 / 40 grote dozen/kisten | Vers | Geen houdbaarheidsdatum | Toegewezen
Gedetailleerde ophaling

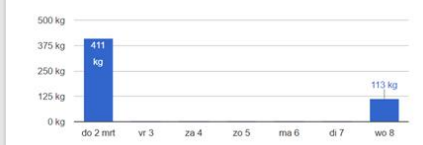
Alle beschikbare schenkingen weergeven

Lopende reserveraties

- Witloof**
8 / 23 kleine dozen/kisten | Vers | Geen houdbaarheidsdatum | Toegewezen
Gedetailleerde ophaling
- Kruldijvie**
2 / 7 grote dozen/kisten | Vers | Geen houdbaarheidsdatum | Toegewezen
Gedetailleerde ophaling
- Witloof**
2 / 28 grote dozen/kisten | Vers | Geen houdbaarheidsdatum | Toegewezen
Gedetailleerde ophaling
- Aardappel bintje**
10 / 40 grote dozen/kisten | Vers | Geen houdbaarheidsdatum | Toegewezen
Gedetailleerde ophaling
- Witloof**
2 / 23 grote dozen/kisten | Vers | Geen houdbaarheidsdatum | Toegewezen
Gedetailleerde ophaling

Alle lopende reserveraties weergeven

Schenkingen gedaan in de laatste 7 dagen



Day	Weight (kg)
do 2 mrt	411
vr 3	0
za 4	0
zo 5	0
ma 6	0
di 7	0
wo 8	113

Statistieken tonen

Laatste bonnen

Datum	Ontvanger
8/03/2017	[Redacted]
2/03/2017	[Redacted] - Lanaken
2/03/2017	[Redacted]
2/03/2017	[Redacted]
2/03/2017	[Redacted]

Alle bonnen weergeven

© 2009-2017 Level IT s.p.r.l. | Schenkingsbeurs - 2.18 - 14/02/2017 08:50

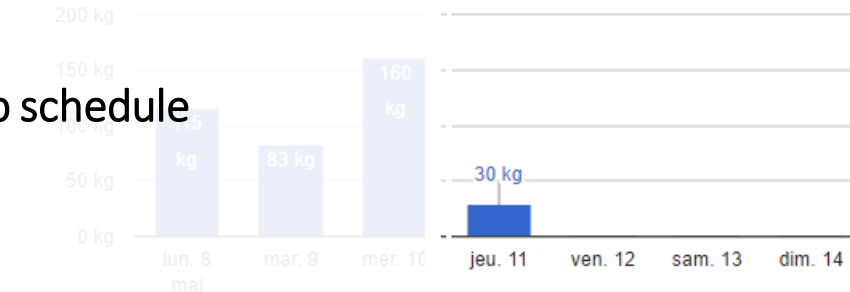
SYSTEMATIC DONATIONS



1	2	3
SCANNING	REMOVING PRODUCTS	STATISTICS



With a pick-up schedule



Afficher les statistiques

Point de vente Hypermarché Carrefour Bonnelles

Point de vente

Hypermarché Carrefour Bonnelles

Associations réceptrices

- Accueil & Partage
- Accueillez-Nous
- Armée du Salut - Seraing
- Croix-Rouge - Jemeppe
- Maison de Fragnée
- Maison Familiale - Grâce
- Télé-Service - Seraing

Derniers bordereaux

Association

Télé-Service - Seraing

Hypermarché Carrefour Bonnelles

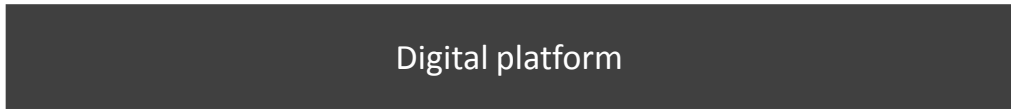
Croix-Rouge - Jemeppe

Armée du Salut - Seraing

Accueil & Partage

Afficher les bordereaux

WHAT OUR GOALS ARE ?



GLOBAL VISION OF A CONNECTED ECOSYSTEM



WHAT OUR GOALS ARE ?

- Increase the volume of donation over the country
- Reduce the “end to end” process time
- Promote fresh and varied products (health)
- Manage quality and traceability of unsold products
- Create 3P values

Taking into account legal and operational constraints



HOW DO WE ACHIEVE THEM ?

- Systematic and territorial approach
- Local partnerships with communities (public and private)
- Pilot projects with each type of actors
- Agile method to continually improve results
- Local projects around a program
- Best practises sharing between actors
- Study the business model (economic, social, env.)
- ...

experience



development

WHAT OUR NEXT STEPS FOR THE FUTURE ARE ?

- Extend the program to the European level considering each state's specificities,
- Create a (connected) network that facilitates the upgrading of food surpluses, by promoting short food circuits and involving each local municipality and city (Food Smart City),
- Improve the results thanks to the introduction of a collaborative logistics learn to give better, and redistribute (better planning).

Key figures – by May 2017 more than **600 tons of food** have transited through the platform and **more than 300 food aid organizations** have already registered. We plan to go pass the 1,500 tons in the next six months with the deployment in the retail sector in Belgium.

